

A PROJECT BY



OM SHIVAM BUILDERS PVT. LTD.
www.omshivambuilders.com

"OM SHIVAM ARJUN"

Plot No. 81, Sector 18, Kamothe, Navi Mumbai

RERA#P52000002821

A SYMPHONY IN THE SKY



PROJECT FEATURES

- Clear Title CIDCO transfer plot
- Shops, 1 BHK, 2BHK & 3BHK Flats
- Quality constructions with earthquake resistance R.C.C frame structure
- Aesthetically designed Lift Lobbies
- Fire Fighting system
- Intercom system
- G + 14 Storeys Residential cum Commercial building
- Ample covered car parking space
- Excellent planning with good lighting & Ventilation
- Lift of reputed brand
- Timely possession
- 24 X 7 Security.

PROJECT AMENITIES

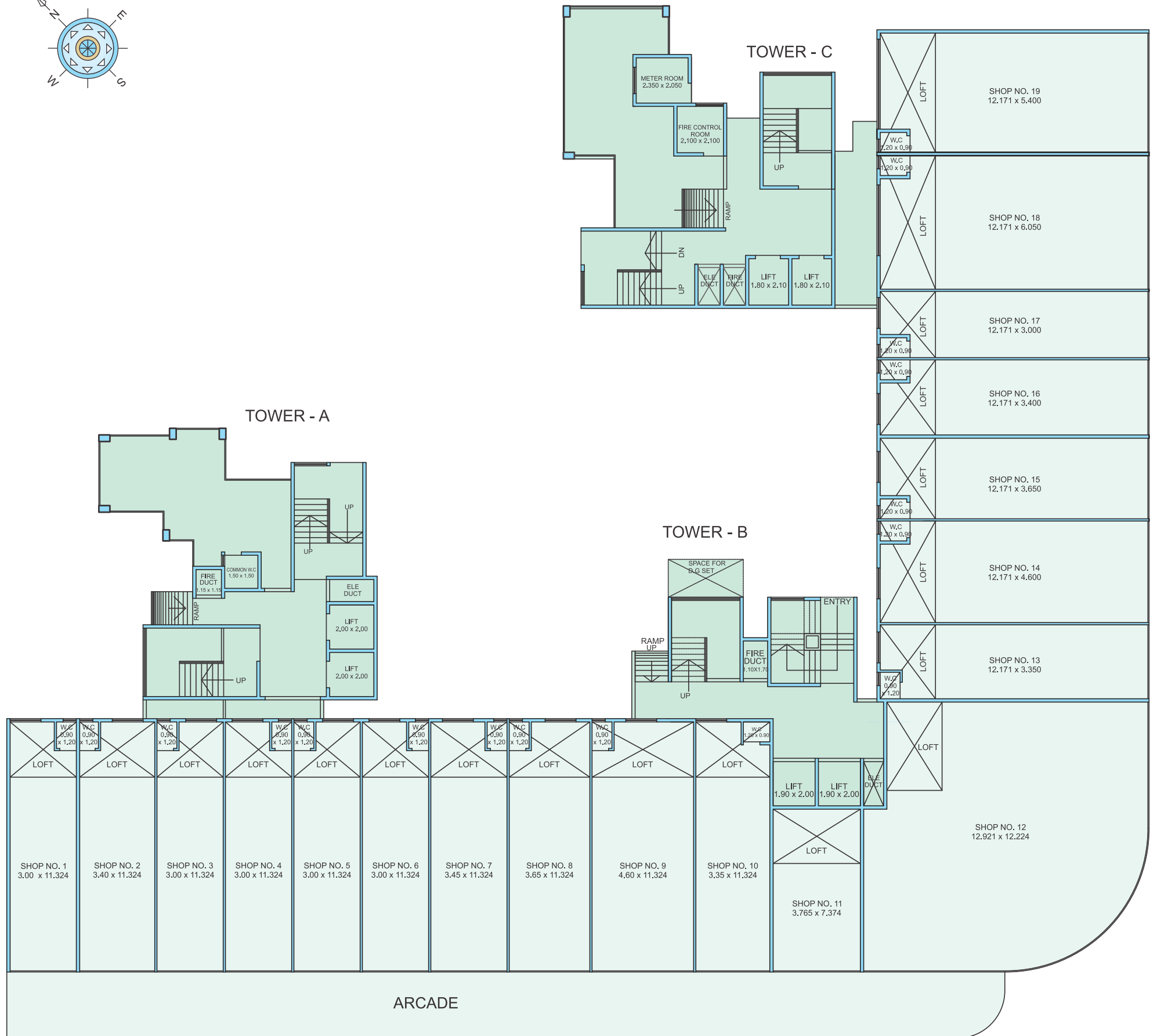
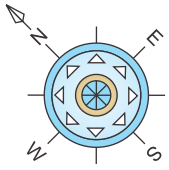
FLOORING	Vitrified flooring in all rooms Anti skid Flooring for terrace balcony
KITCHEN	Granite kitchen platform with SS Sink Ceramic tiles over the Kitchen platform up to beam level
BATH / WC	Ceramic glazed tiles up to full height Branded Sanitary fittings Concealed plumbing with hot & cold mixer arrangement
DOORS	Solid Flush door with designer laminate & Internal wooden doors
WINDOWS	Power coated sliding window with granite frame
WIRING	Concealed Copper wiring with adequate points for TV, cable, Telephone Ac, Refrigerator, Geysers, Washing Machine etc.
WALLS & PAINT	POP / Gypsum finish Internal walls with premium paint Standard quality Acrylic paint on external wall
WATER TANK	Underground & Overhead tank with adequate storage capacity
TERRACE	Special Water proofing treatment
PODIUM	Landscaped Podium Garden With sitouts, & fitness center

LOCATION FEATURES

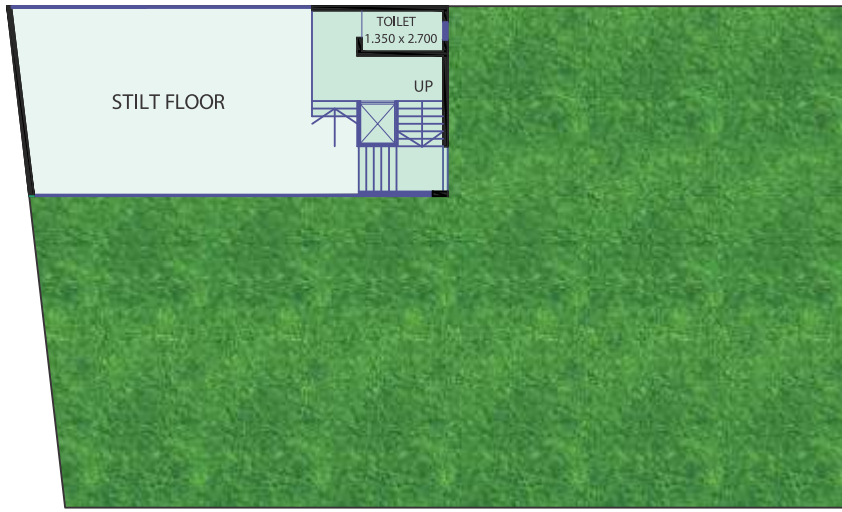
- Peaceful & quite environment
- Excellent connectivity by train and via Mumbai Pune Express Highway
- Approx 10 min walkable distance from Khandeshwar Railway Station
- Approx 10 min walkable distance from Mansarovar Railway Station
- Near proposed Navi Mumbai Airport
- Bank, Markets, Hospital, Schools & Colleges, Garden at close proximity from project site.



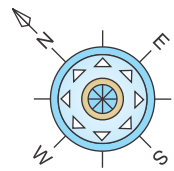
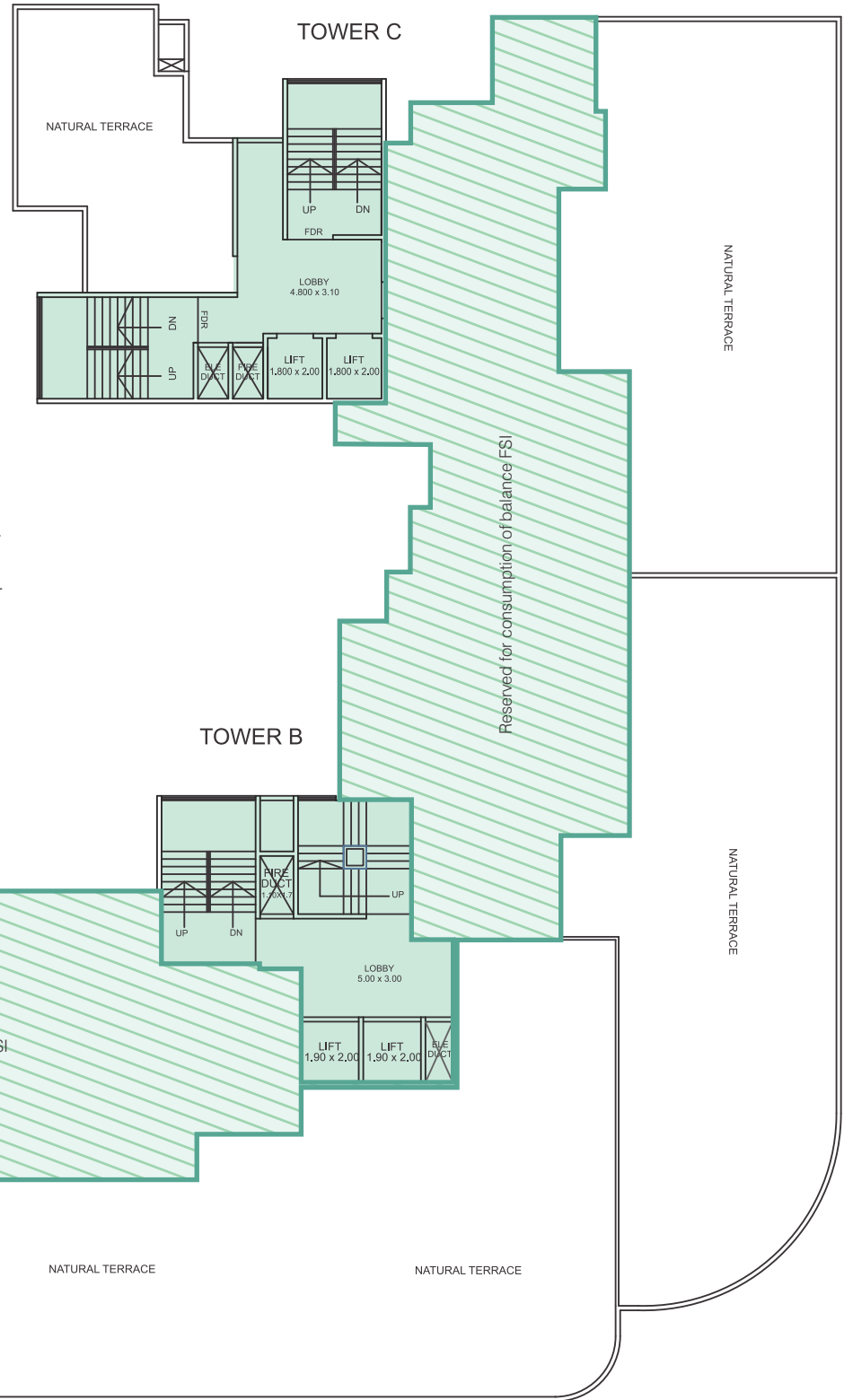
OM SHIVAM " ARJUN "



Ground Floor Plan



Landscape Garden & Fitness Centre

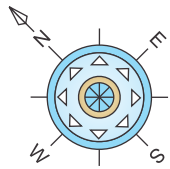


1st Floor Plan (Subject to change)

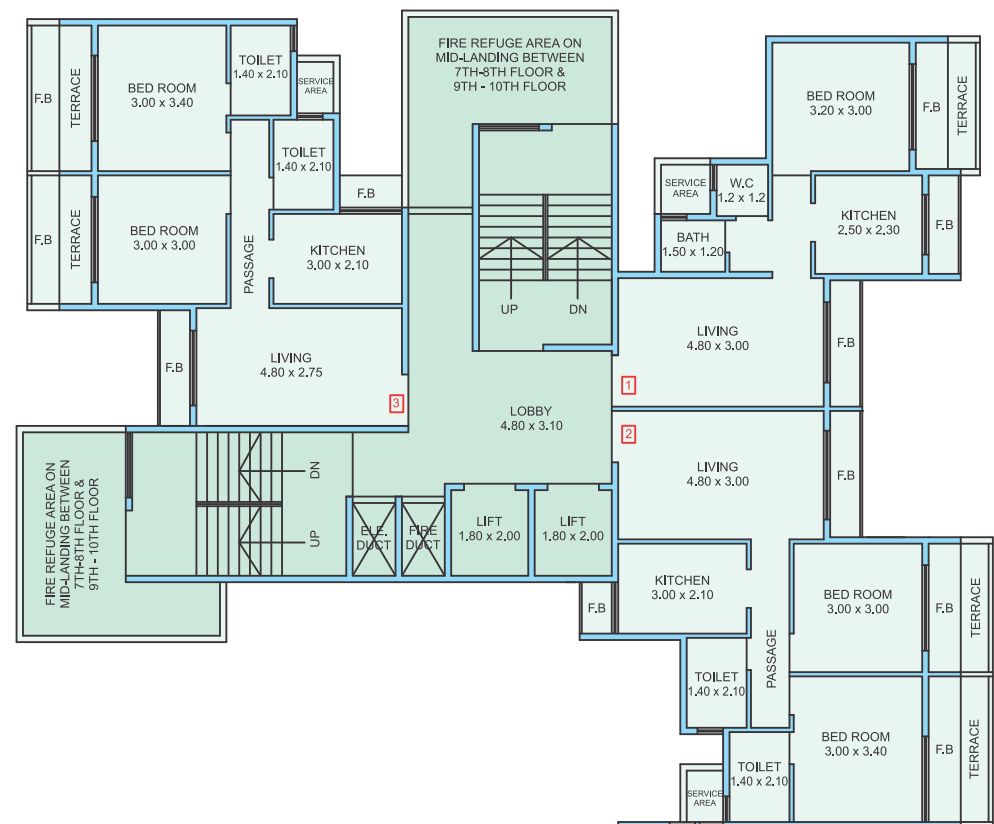


3 BHK
Show Flat - 3D View

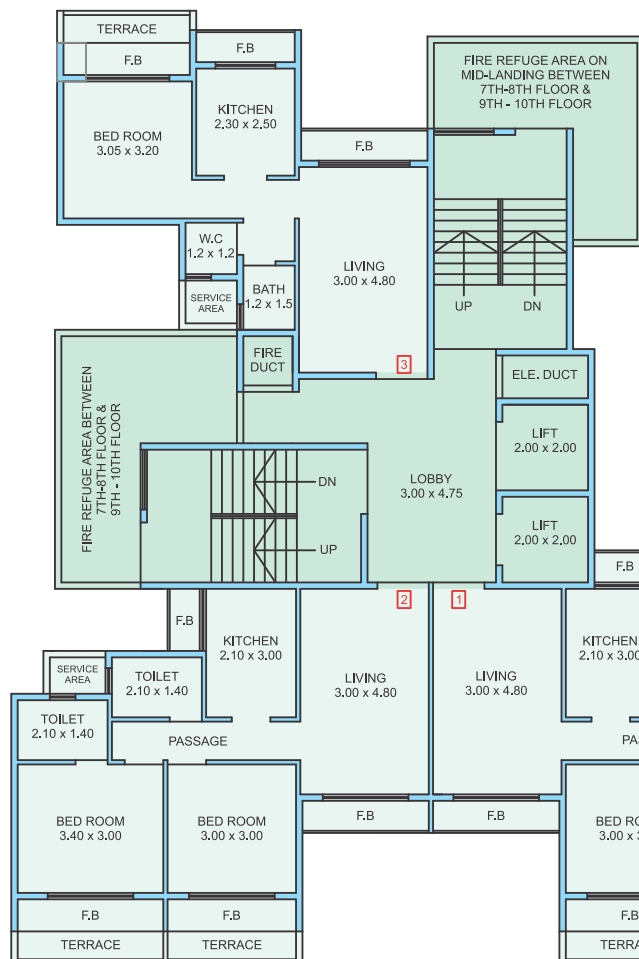




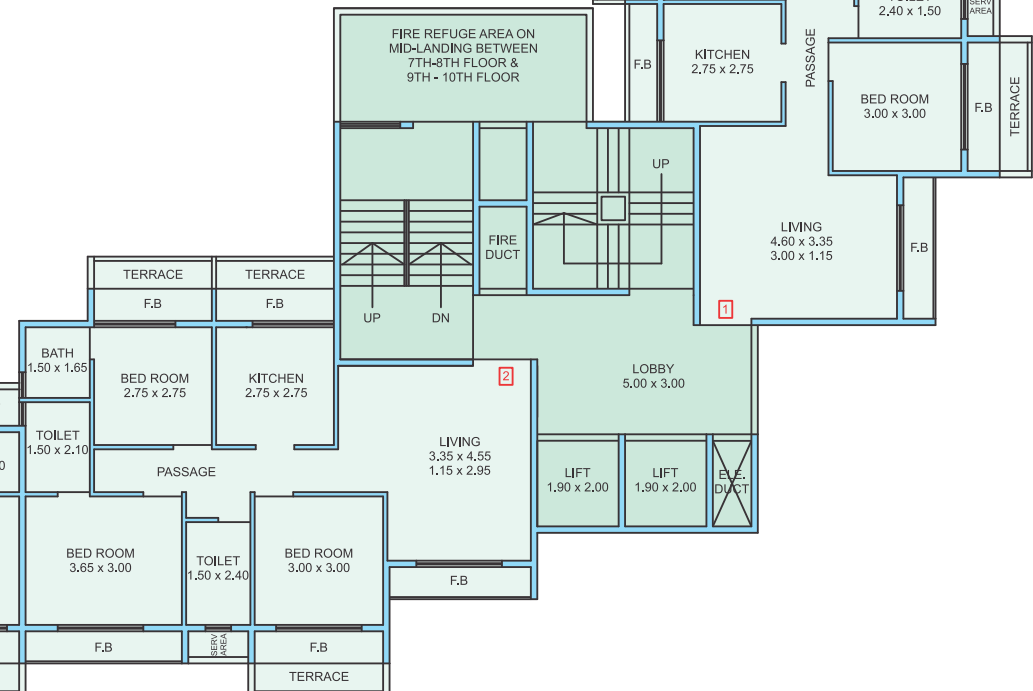
TOWER - C



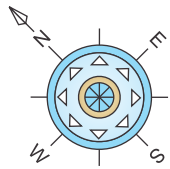
TOWER - A



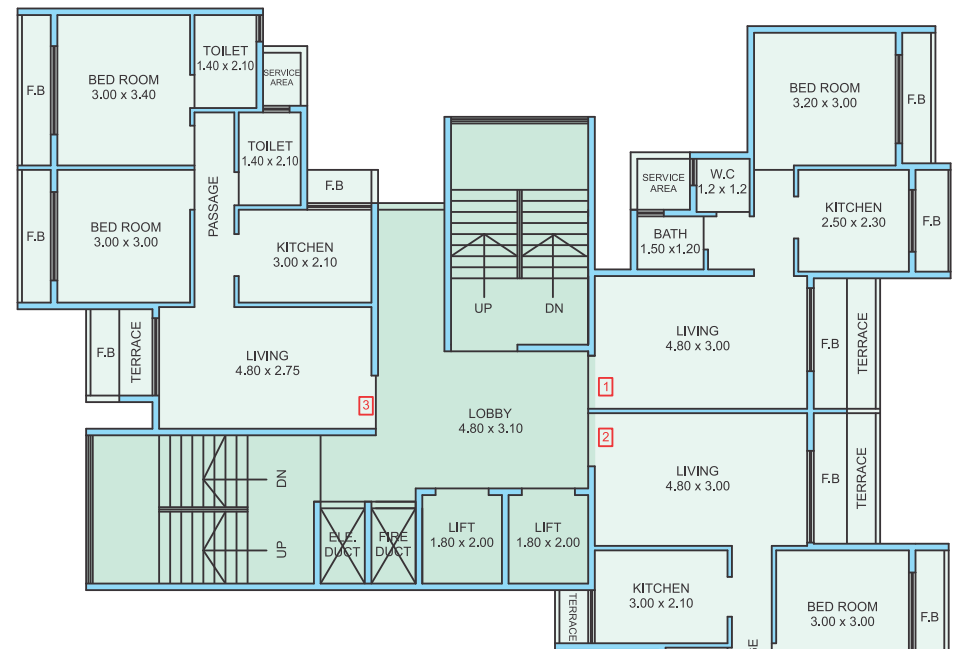
TOWER - B



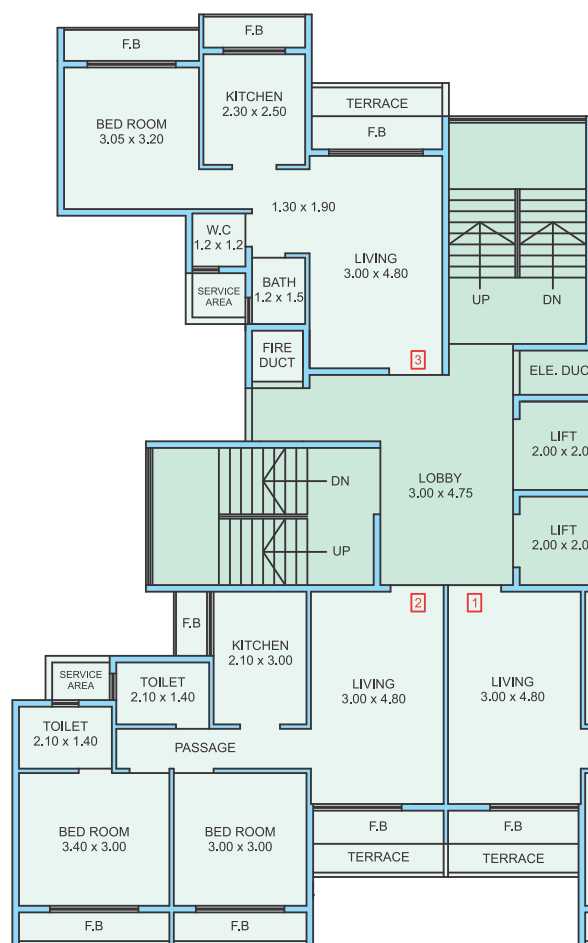
Typical Floor Plan 2nd, 4th, 6th, 8th, 10th & 12th Floor



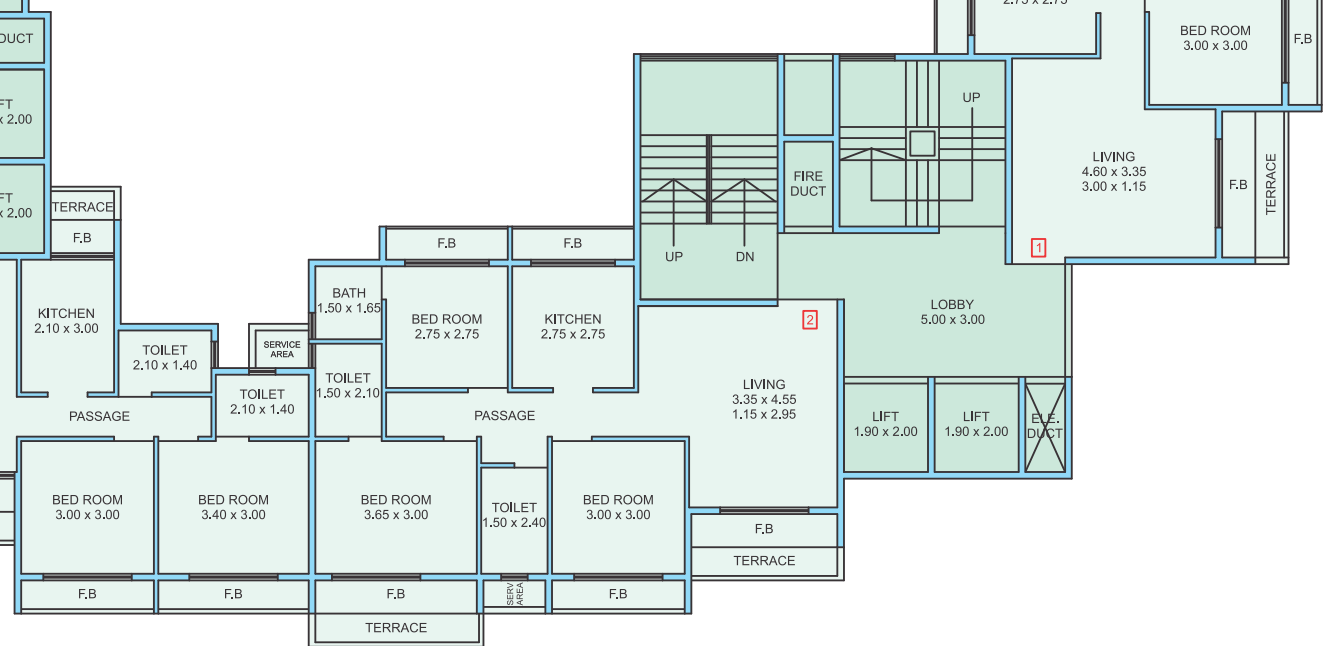
TOWER - C



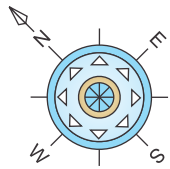
TOWER - A



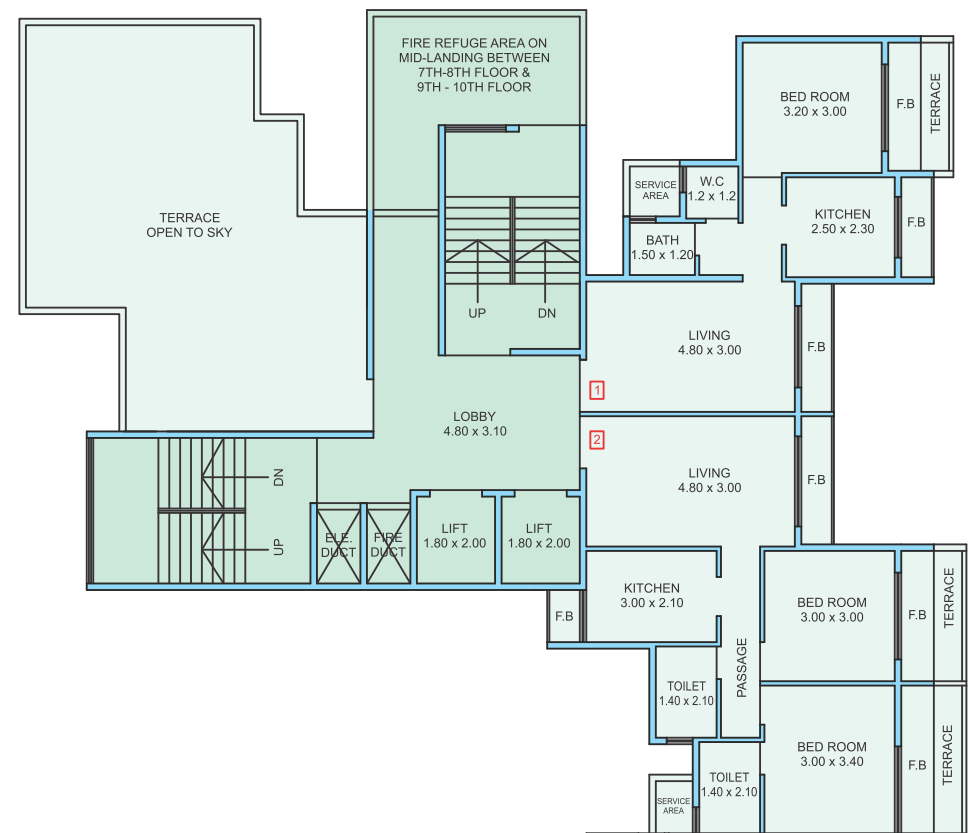
TOWER - B



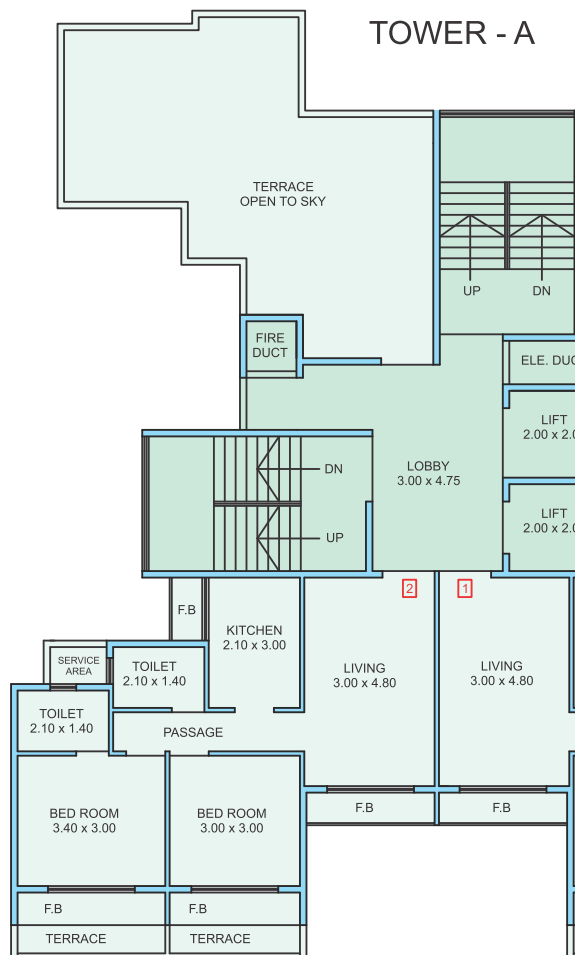
Typical Floor Plan 3rd, 5th, 7th, 9th, 11th & 13th Floor



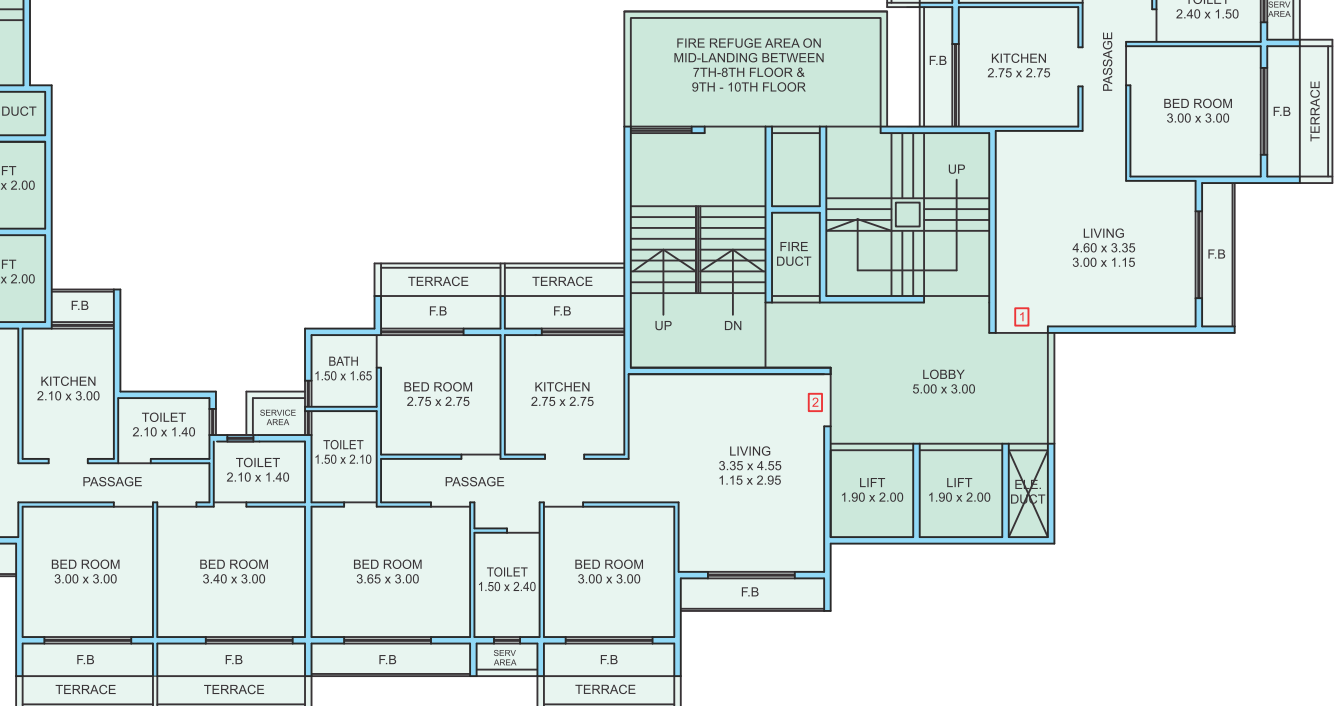
TOWER - C



TOWER - A



TOWER - B



14th Floor Plan

COMPLETED PROJECTS



OM SHIVAM CENTER

Plot No. A33, A34, A45 to A46, Sector 20, Nerul, Navi Mumbai



KANCHAN KUTIR

Plot No. C39, C39/1, C96, Sector 20, Nerul, Navi Mumbai



YASH APARTMENTS

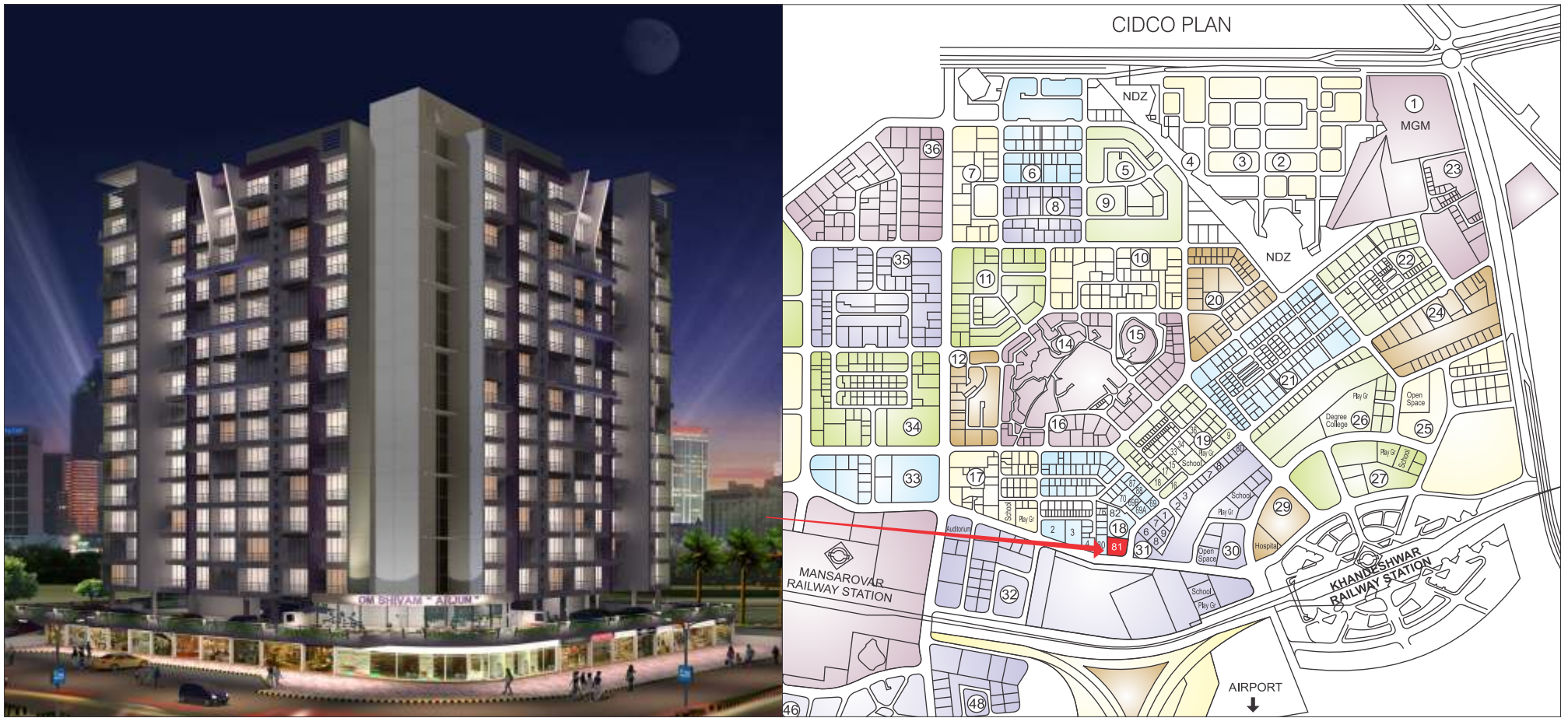
Plot No. 129, Sector 44, Nerul, Navi Mumbai



OM SHIVAM RESIDENCY

Plot No. 8A, 9, Sector 17, Kamothe, Navi Mumbai

LOCATION PLAN



Kamothe (Mansarovar) is one of the fastest developing node of Navi Mumbai. It is developed and maintained by CIDCO. Kamothe is located on Mumbai - Pune Expressway at a less than one hour drive from the heart of Mumbai city. It is the third node (Panvel being 1st and Khandeshwar being 2nd) which lies on Mumbai - Pune Express Highway, when you drive down from Pune. the area started developing from 2000 and now it has number of ready and under construction projects both in the commercial and residential segments.



OM SHIVAM BUILDERS PVT. LTD.

www.omshivambuilders.com

Office Address : B-104, Om Shivam Residency, Plot-8A+9, Sector-17, Kamothe, Navi Mumbai 410 209 | Tel: 022 2743 4556

Email : sales@omshivambuilders.com | omshivam_builders@yahoo.co.in

Mobile : 7738406626 / 7304086008 / 9920176149

ARCHITECT



C.M. SAMANT
ARCHITECTS & DESIGNERS
Email : ceemsamant@yahoo.com
Vashi, Navi Mumbai

LEGAL ADVISOR

SUHAS VEKHANDE
Advocate High Court
B-401, B-Wing, Vishnu Complex,
Sec.: 15, CBD Belapur, Navi Mumbai

STRUCTURAL ENGINEER

S.R. CONSULTANT
Vashi, Navi Mumbai

Disclaimer : The information contained in this brochure is an indication of the proposed development. All the plans, drawings and dimensions are subject to the approval of the authorities or otherwise. The developer reserves the right to make changes or alterations at their sole discretion. No right of any nature should be construed from brochure.