

## LOCATION MAP



CORPORATE OFFICE: Off. No 32/33, 2nd Floor, Mahavir Centre  
Above Golden Punjab Restaurant, Sector- 17, Vashi, Navi Mumbai  
Call: 022 2789 8551, +91 93229 40414 • Email: [marketing@goodwilldevelopers.com](mailto:marketing@goodwilldevelopers.com)  
Website: [www.goodwilldevelopers.com](http://www.goodwilldevelopers.com)

SITE ADDRESS: Plot No A-37, Sector- 5, Khanda Colony, New Panvel (W).

Disclaimer: The information in this brochure is indicative of the kind of development that is proposed. Subject to the approval of the authorities or in the interest of continuing improvement, the developers reserve the right to change the layout, plans, specifications or features without prior notice or obligation. The details, images, sketches and elevation contained in the leaflets/brochures or any other printed material, are only indicative and artistic imagination, may not be exact or accurate, and the same does not form either the basis or part of the offer or contract.

Thoughttrains.com

MAKE YOUR  
— LIVING —  
YOUR PRIDE





GOODWILL PRIDE



TAKE THE PRIDE  
— OF LIVING —  
LIKE A KING

Life is made of lot of stories that make you feel rich. Here, it's made of 14. Welcome to Goodwill Pride, where a tower of 14 storeys brings you 1 & 2 BHK homes where you can live your life like a king. Here, your spacious homes are complimented with integrated community features & amenities. Live the utterly simplified & well-managed life at Goodwill Pride & take the pride of living a blissful life.

**PROJECT HIGHLIGHTS**

- A tower of 14 storeys
- 1 & 2 bhk terrace apartments
- Fully equipped gymnasium
- Ample car parking facility
- High tech CCTV surveillance
- Branded lifts
- Power backup facility for lifts & common areas

**APARTMENT AMENITIES**

- Branded vitrified tiled-flooring in all rooms
- Plastic paint on all internal walls
- Designer fittings on the door
- Branded modular switches
- Elegantly designed bathrooms with international standards fittings
- Granite kitchen platform with service platform
- Anodized aluminum coated sliding windows
- Intercom & video door phone facility in all apartments

# LAYOUT PLAN



# FLOOR PLAN

1st Floor



MUMBAI - PUNE EXPRESSWAY



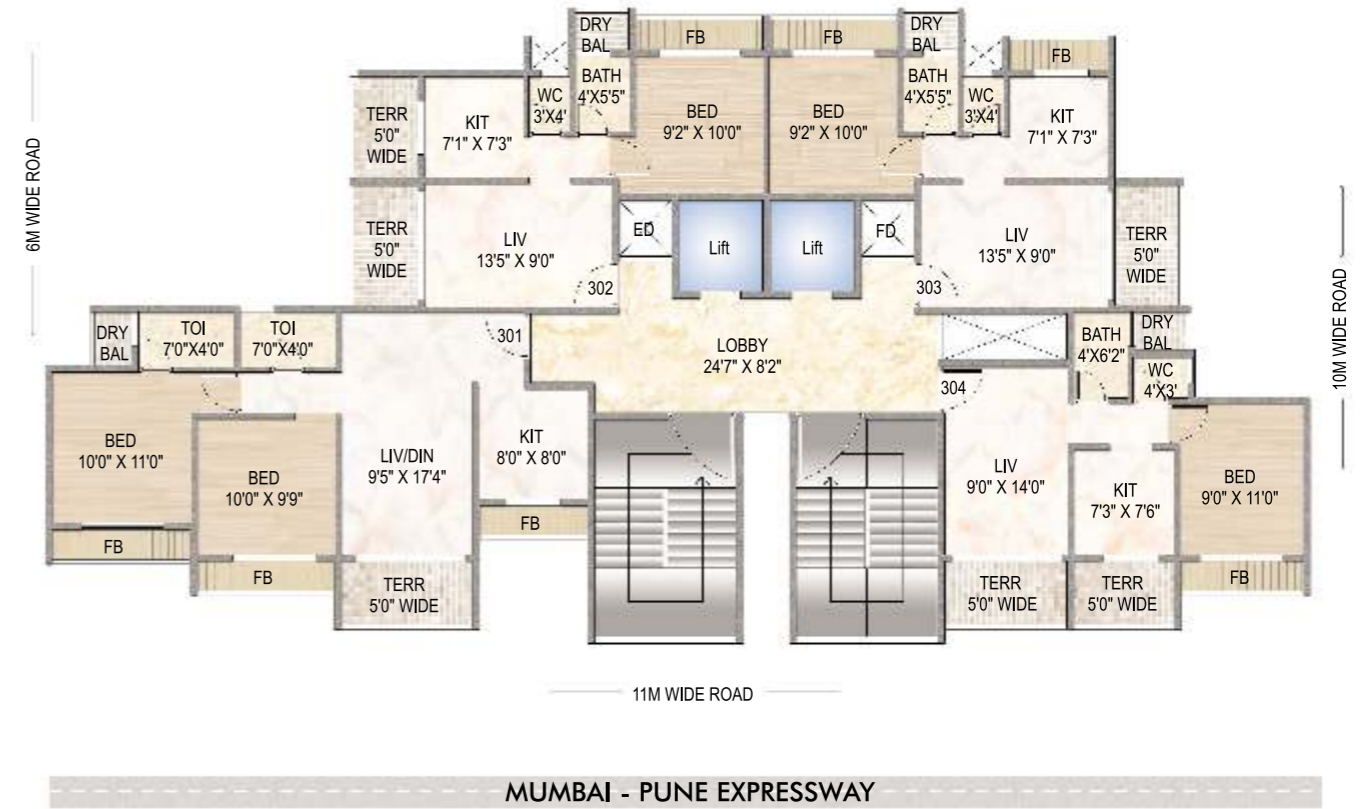
## TYPICAL - EVEN FLOOR

2nd | 4th | 6th | 8th | 10th | 12th



## TYPICAL - ODD FLOOR

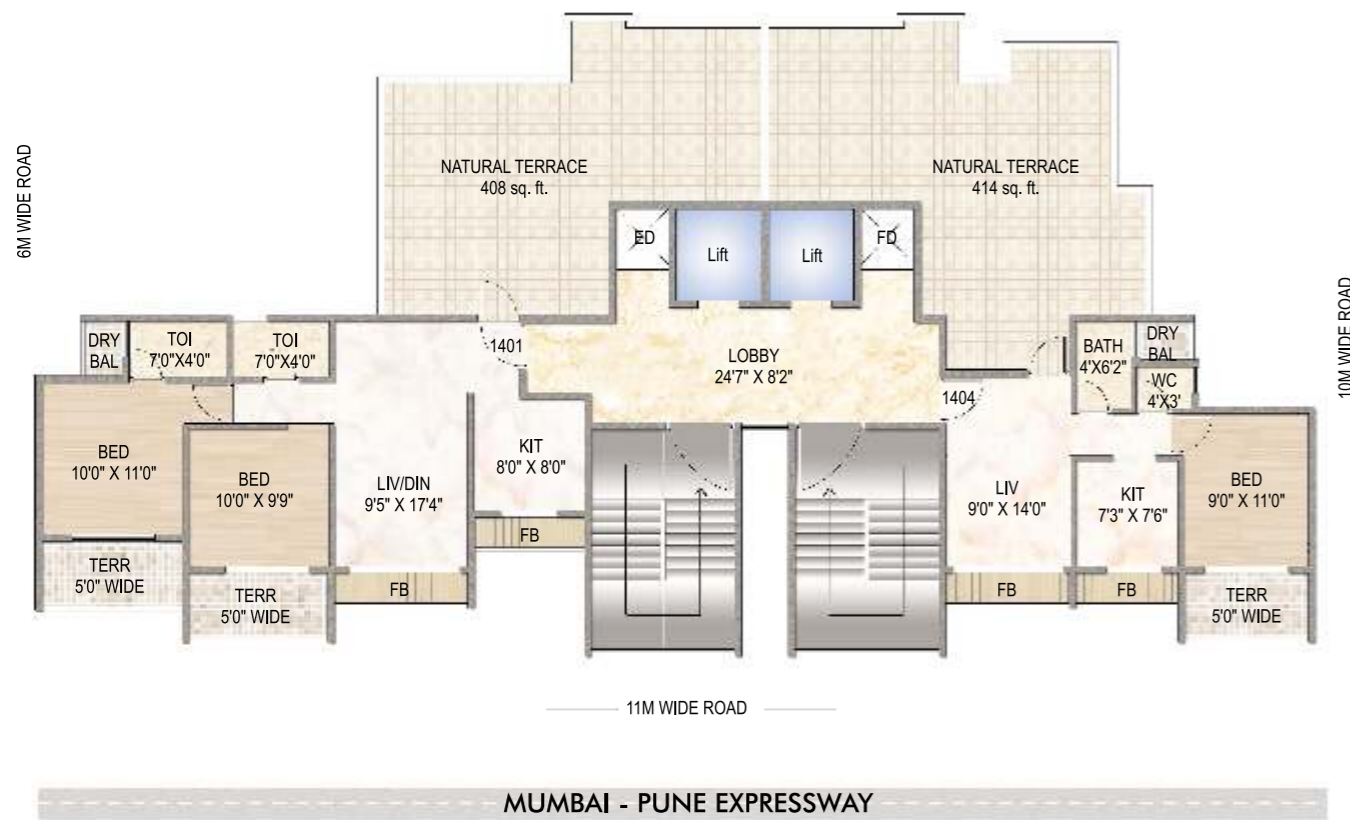
3rd | 5th | 7th | 9th | 11th | 13th



Note: Terrace in all apartments except in flat 204



## 14th FLOOR PLAN



A  
WELL-DEVELOPED  
— LOCATION —  
THE ADDRESS OF PRIDE

### NEW PANVEL

The uncomplicated living & an address of future; Goodwill Pride truly brings you pride of living at just the right place. Where the city's development meets to the serenity of nature. Where the solitude of living outskirts meets the connectivity of living at the center. It can't be more empowering when you live at a well-developed destination.

### LOCATION ADVANTAGES

- Fully developed well-planned locale
- Necessities like local markets, schools, colleges, hospitals, banks, ATM's etc. at a close reach
- 5 mins walk from old Bombay-Pune highway
- Approx. 3 kms away from Panvel & Khandeshwar Railway Station
- 3 kms from upcoming Navi Mumbai International Airport
- Green environment & serene surroundings